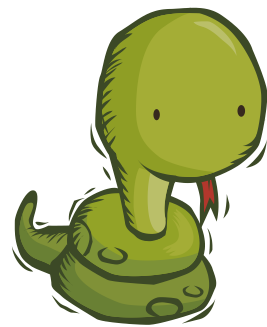
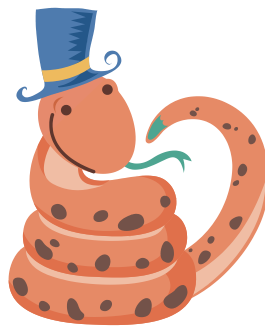
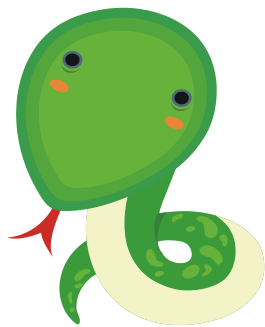


A Parent's Guide to the Sentence Snake



Hemingford Grey
Primary School

SENTENCE SNAKE PROGRESSION

GLOSSARY

SIMPLE SENTENCE



The man

walked

into

the woods.



What/who the sentence is about

An action

Describes the action



The old man

walked

into

the dark, menacing woods.



Explains the position of the main subject

Describes the person, object, place (noun)



The old, nervous man

crept

cautiously

into

the dark, menacing woods.

BECOMING MORE COMPLEX



The old, nervous man

crept cautiously

into

the dark, menacing woods because a mysterious creature lurked there.

Person, object or place (Noun)



Though it was late, the old, nervous man

crept

cautiously

into

the dark, menacing woods because a mysterious creature lurked there.

PURPOSE:

To make the children into competent and creative writers by teaching them from an early age how sentences are structured, so they clearly understand the function of words in sentences and ultimately create their own varied and interesting sentences.

HOW DOES IT WORK?

The Snake is a visual tool that can be physically held and moved around by the children. This helps children to understand that words in a sentence have to be in a certain order to make sense. Once children are confident with this they move to writing well structured simple sentences.



The Sentence Snake grows as teachers introduce more cards to make a simple sentence more complex. As they progress through the school, children experiment with moving the words around to create interesting and varied complex sentences.

For Example

A simple sentence: The goat went over the bridge.

A more complex sentence: After a while, the scared goat crept slowly over the wooden bridge so he could eat the sweet green grass.

Some of the parts of the sentence have an action associated with them, and each sentence snake card is colour coded to help the children remember the structure of a sentence.